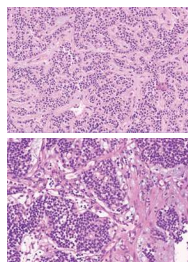


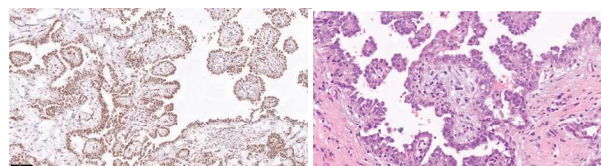
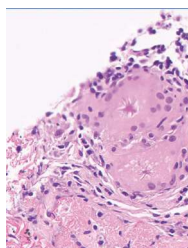
**Lung typical carcinoid (H&E 20×)**

Well-differentiated neuroendocrine tumor showing less than 2 mitoses/10 high power fields and no necrosis (Fink G, Krelbaum T, Yellin A, et al. Pulmonary carcinoid: presentation, diagnosis and outcome in 142 cases in Israel and review of 640 cases from the literature. *Chest* 2001; 119 (6): 1647-51.)



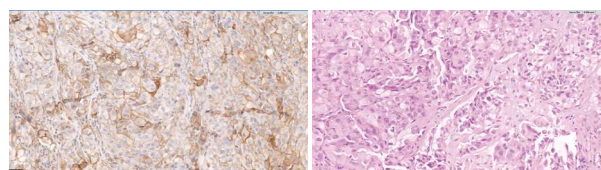
**Asteroid bodies in giant cell (H&E 40×)**

Non-specific, star-shaped, cytoplasmic inclusions which may be present within giant cells of granulomas in sarcoidosis as well as other granulomatous lesions (Papadimitriou JC, Drachenberg CB. Ultrastructural analysis of asteroid bodies: evidence for membrane lipid bilayer nature of components. *Ultrastruct Pathol* 1992; 16 (4): 413-21.)



**Pleural epithelioid malignant mesothelioma (H&E 20×), WT1 nuclear immunostain (10×)**

WT1 (Wilms tumor 1 antigen) is a nuclear staining. It belongs to the immunohistochemistry panel used for the diagnosis of epithelial malignant mesothelioma (Allen T.C. Recognition of histopathologic patterns of diffuse malignant mesothelioma in differential diagnosis of pleural biopsies. *Arch Pathol Lab Med* 2005; 129 (11): 1415-20.)



**Lung squamous cell carcinoma (H&E 20×), PDL-1 membranous immunostain (20×)**

PDL-1 (programmed cell death ligand 1) expression serves as predictive biomarker for response to immune checkpoint inhibitor therapy in non-small cell lung cancer (NSCLC) (squamous cell is a type of NSCLC) (Osmani L, Askin F, Gabrielson E, Li QK. Current WHO guidelines and the critical role of immunohistochemical markers in the subclassification of non-small cell lung carcinoma (NSCLC): Moving from targeted therapy to immunotherapy. *Semin Cancer Biol* 2018; 52 (Pt 1): 103-9.)